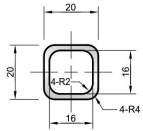


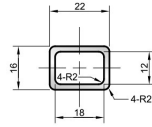
■アルミ角パイプ 材質7N01 全長 2,000mm

20×20 2T



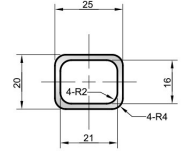
単重 (kg/m) : 0.373
肉厚 (mm) : t = 2

22×16 2T



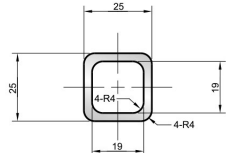
単重 (kg/m) : 0.384
肉厚 (mm) : t = 2

25×20 2T



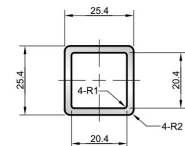
単重 (kg/m) : 0.428
肉厚 (mm) : t = 2

25×25 3T



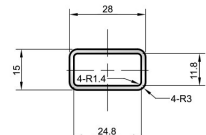
単重 (kg/m) : 0.734
肉厚 (mm) : t = 3

25.4×25.4 2.5T



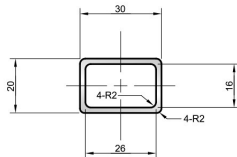
単重 (kg/m) : 0.610
肉厚 (mm) : t = 2.5

28×15 1.6T



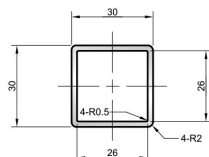
単重 (kg/m) : 0.327
肉厚 (mm) : t = 1.6

30×20 2T



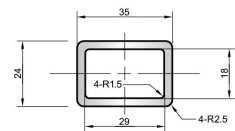
単重 (kg/m) : 0.517
肉厚 (mm) : t = 2

30×30 2T



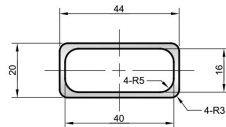
単重 (kg/m) : 0.597
肉厚 (mm) : t = 2

35×24 3T



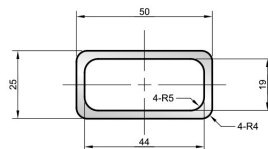
単重 (kg/m) : 0.876
肉厚 (mm) : t = 3

44×20 2T



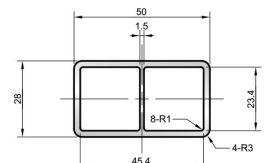
単重 (kg/m) : 0.686
肉厚 (mm) : t = 2

50×25 3T



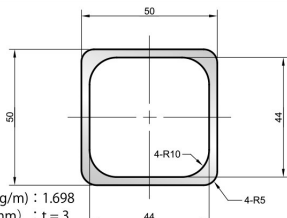
単重 (kg/m) : 1.118
肉厚 (mm) : t = 3

50×28 2.3T



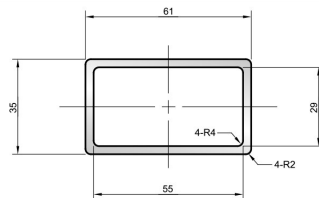
単重 (kg/m) : 1.020
肉厚 (mm) : t = 2.3

50×50 3T



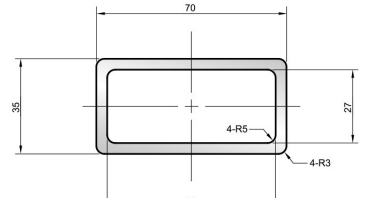
単重 (kg/m) : 1.698
肉厚 (mm) : t = 3

61×35 3T



単重 (kg/m) : 1.552 肉厚 (mm) : t = 3

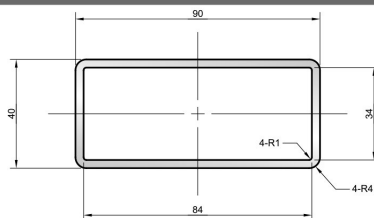
70×35 4T



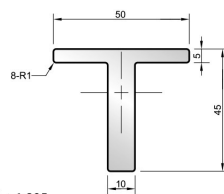
単重 (kg/m) : 2.196 肉厚 (mm) : t = 4

■アルミT字 材質7N01 全長 500mm

90×40 3T



単重 (kg/m) : 1.974 肉厚 (mm) : t = 3



単重 (kg/m) : 1.805